

## Key Components of the ESL Program

These components are integral to the success of the ESL program at Birch elementary. The design team, Birch staff, and LLSS staff are working together to ensure that these components and more are in place for the 2006-2007 school year.

### Identification and Assessment at Birch:

- ✓ Home Language Survey
- ✓ English Language Assessment
- ✓ Program placement

### Family Community:

- ✓ Social Events
- ✓ Orientation to School
- ✓ Parent Groups / programs
- ✓ Translators and Interpreters
- ✓ Value equity and diversity
- ✓ Volunteers
- ✓ Community Resources

### Academic:

- ✓ Classroom teachers trained to work with English language learners in the content areas utilizing techniques favorable for all learners.
- ✓ ESL teacher specialized in instruction for English language learners.
- ✓ Multiple forms of ongoing assessment
- ✓ Language development tracked through the Language Development Profile
- ✓ Value equity and diversity

## Birch Elementary School

### English as a Second Language



*Challenging students of all ages and linguistic and cultural backgrounds to achieve their academic, creative and physical potential*

Provide and promote effective instruction to develop English Language Proficiency in listening, speaking, reading, and writing for limited English proficient students.

- **Ensure** that effective instruction in all areas is provided for second language learners.
- **Collaboration** between classroom and ESL program staff to support student achievement.
- **Cultivate** respect for the value of diversity in a language enriched school.
- **Commitment** to provide a quality program that results in an English language proficiency level meeting state and district goals.
- **Promote** community and family involvement to support high academic achievement.

## Frequently Asked Questions

**Q: How will an ESL Program change Birch?**

**A:** ESL is an added program bringing resources and language enrichment to the school that ALL children can benefit from. It does not take away from any other program.

**Q: What is the difference between ESL and Bilingual Programs?**

**A:** ESL instruction is delivered by a certified English as a Second Language teacher in only English. ESL curriculum focuses on listening, speaking, reading, and writing in English through content themes occurring in the classroom. In a Bilingual program, content is delivered in the student's native language and in their second language. The goal is to maintain or develop bilingualism.

**Q: When will the ESL program begin?**

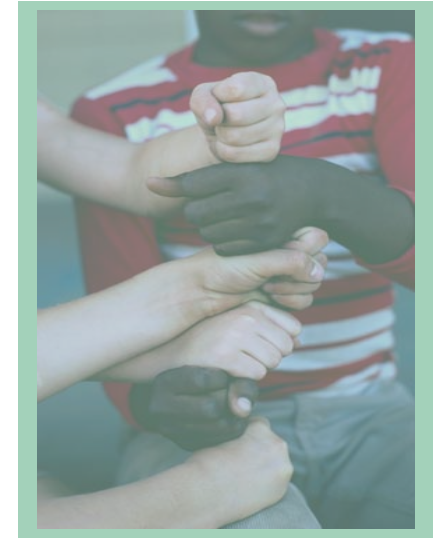
**A:** In the fall of the 2006-2007 school year.

**Q: How are children identified for the program?**

**A:** Every family completes a Home Language Survey when registering for school. If there is a language other than English in the home, the child will take an English language proficiency exam. Based on the results, the ESL teacher or coordinator will determine if support in English is necessary. Students from the Aspen Creek attendance area will go to Literacy and Language Support Services for assessment and will be placed at the Birch ESL program if services are needed.

**Q: How is ESL support delivered?**

**A:** ESL support typically occurs in small groups outside of the classroom for 45-90 minutes depending on the proficiency level of the student. The students are grouped by language level and also by grade level. The ESL teacher may also go into the classroom to support the teacher with techniques to make the content more accessible to all students. The classroom teacher supports the English language learner in the classroom with strategies that maximize students' opportunities to acquire English and comprehend the content.



"He Spoke ...It wasn't how I spoke  
He held my hand, it wasn't the color of my hand  
..But when he laughed, it was how he laughed..  
...When he cried, it was how he cried...."

**Birch Elementary**

*Linda Brookhart, Ph.D.*

1035 Birch  
Broomfield, CO 80020  
303-469-3397

**Literacy and Language Support Services**

*Director: Jorge Garcia*

*ESL coordinator: Tiia Norsym*

6500 Arapahoe  
Boulder, CO 80303  
303-447-5166

<http://www.bvdsd.org>