

Fall 2008 Report on



Bear Creek Elementary

Message from the Principal

Bear Creek is a vibrant school where creative staff and engaged students learn together with the support of parents and community. Our environment is one in which academic achievement is expected, all students are valued, and diversity is embraced. Our collective vision and shared goals unite us to work cooperatively and fuel our passion for providing the best possible learning experience for all students. Historically we have a reputation for educational excellence and continue to make significant strides. We are proud of many of our school achievements.

Some highlights are:

1. **Honored with the U. S. Department of Education's 2006 National Blue Ribbon Award**
2. Eleven years of exemplary opportunities through our dynamic focus program of cognitive and conceptual development in math, music and science
3. Recipient of the John J. Irwin Schools of Excellence Award, Spring 2001-2007
4. Continued partnerships with the University of Colorado – Bear Creek will be an elementary site for the recently awarded CU Teach grant
5. Outstanding academic achievement by students when evaluated on numerous measures and CSAP scores among the highest in the state.
6. Superior student achievement in the arts and athletics
7. Recognition of staff and students for achievements outside the school
8. Parent and staff satisfaction with our school as reported by the BVSD Snapshot Survey (Annually parents and students have rated the safe-caring community, the personal attention and the academic programs very highly.)

While we celebrate our recognitions, our greatest source of pride and first commitment is to our students. I am proud to be your principal and look forward to working with the Bear Creek community to seek ways to continuously improve our school.

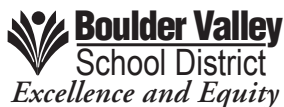
Sincerely,
Kent Cruger

Bear Creek Elementary

2500 Table Mesa Drive
Boulder, CO, 80305
303.499.8555

Principal: Kent Cruger

<http://schools.bvsd.org/bearcreek/>



Program Characteristics

Bear Creek Elementary School is a dynamic, innovative focus school that emphasizes the multi-faceted cognitive and conceptual connections among mathematics, science and music. Our focus content has students looking at interdisciplinary connections to enrich their learning and their lives.

A high priority is placed on a rich language arts experience as a solid foundation in literacy skills. Students are enveloped in an investigative and creative classroom culture that develops thinking skills and evokes the use of critical thinking.

The staff provides learning experiences that challenge students to excel to their maximum potential. We strive to stimulate intellectual curiosity and love of learning in children. During the acquisition of skills and knowledge, students are encouraged to ask questions, take risks, and be willing to make mistakes in their quest for greater understanding. The school helps students to develop successful relationships with peers and creates an environment in which students can feel both self-assured and accepting of others. Parent volunteers are a visible and valuable resource in our school and teachers build strong home-school bonds through personal contacts, reports, newsletters and conferences.

Fine and performing arts are integral parts of the education at Bear Creek. The school's physical education classes place an emphasis on physical fitness, individual and team sports, and sportsmanship. Excellent media and technology resources are available.

Bear Creek provides support and assistance to meet the needs of all students. Special services are available for students who are talented and gifted, and students with disabilities. Bear Creek emphasizes the importance of respecting and valuing individual differences and appreciating cultural plurality.

**This school is fully accredited by the district
in compliance with the Colorado State accreditation indicators.**

Special Programs and Opportunities

Spotlights – This choir is open to fourth and fifth graders who have an interest in developing vocal skills. The choir rehearses mornings before school and performs two programs during the year at school and in the community. Bear Creek had more than 100 students participate in Spotlights throughout this past year.

Before and After-School Clubs and Activities – A variety of clubs are offered each year based on interest. Last year some of the opportunities that were available to students were student council, chess club, foreign languages, homework club, unicycle club, jump rope group, Bolder Boulder training group, Girls on the Run, boys and girls ensembles, and intramural sports.

Science Fair – Bear Creek is proud of its annual Science Fair, which is open to all students. This past year more than 200 students participated. Community members serve as judges and Einstein awards are given for thorough data collection, interesting questions, exceptional displays and thoughtful conclusions.

Enrichment Activities – Many enrichment activities are offered every year. Some of the exciting opportunities are the Colorado Thinking Cap Quiz Bowl, the National Geographic Geography Bee, Spelling Bee, CU Science Explorers, BVSD Literacy magazine, and Math Olympiad.

Healthy Living Focus– The Bear Creek community believes strongly in teaching students about smart choices regarding personal, community and global health. Activities include a Safe Routes to School program to encourage car-free commuting to school, the Garden to the Table project which produces food for our Harvest Bar lunches, and our Green Star Schools goal of moving toward zero waste production.

Teacher Quality

Federal laws enacted in 2002 require school districts to hire teachers who meet identified standards and who are deemed highly qualified in their field of endorsement. Approximately 99.7 percent of Boulder Valley School District's teachers currently meet or exceed the federal requirements. The district has an exceptionally well-qualified cadre of teachers, who on average have 12 years of teaching experience. Over half of our teachers hold advanced degrees. For any teacher who does not currently meet the federal criteria, a plan exists to become highly qualified by the end of the school year.

Additional information on staff classification, salaries and professional experience of teachers is included in the School Accountability Report by the Colorado Department of Education.

To request specific information about a teacher's qualifications, parents may fill out a Teacher Qualification Request form. These forms are available from the school office, at the BVSD website (go to <http://www.bvsd.org/Parents> and scroll to the bottom of the page for the link), or at the district Education Center Human Resources department (6500 East Arapahoe Road). To ensure that fair and uniform information is provided, no requests for teacher qualification will be processed at the school. All requests must be processed by the Boulder Valley School District's Department of Human Resources.

Student Teacher Ratio: 18.7:1

According to the 2007-08 Snapshot Survey. . .

- 97 percent of parents say teachers at Bear Creek Elementary encourage their student to do his/her best.
- 96 percent of parents agree teachers at Bear Creek are committed to maximizing student achievement.

Parent Satisfaction

According to the 2007-08 Snapshot Survey. . .

- 98 percent of parents say their child has a positive attitude about Bear Creek Elementary.
- 95 percent agree that Bear Creek sets high and realistic expectations for their child.
- 97 percent of parents say they feel welcome at Bear Creek.

What Parents Are Saying

“My daughter has had such a wonderful experience in school! She has learned so much and enjoyed every minute of it. She actually wishes she could go to school every day. The teachers exemplify all of the qualities I would hope for — knowledge, compassion, insight, enthusiasm.”

“Bear Creek teachers integrate the pure sciences with literature and the social sciences through stories and discussions. The children are encouraged to do their best and take responsibility for their successes which makes their achievements all the more important to them. The teachers are always available to them for extra help and support with an extensive repertoire of ways to teach basic skills coming from an understanding that we all don't learn the same way.”

School Climate

Assurance of our good faith effort of implementation of a safe school plan, including use of a threat assessment team to evaluate threats of violence, is provided in our annual End-of-Year Report which is available in the school office.

This report provides evidence that

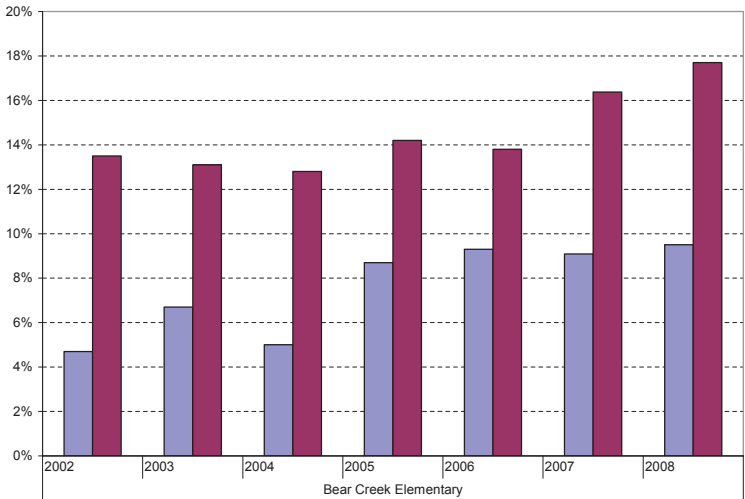
- the school improvement team analyzes and uses data from the student climate survey;
- the school is taking specific actions to continuously improve the safe, civil learning environment of the school;
- the school has a mechanism for students to report anonymously statements or conduct that worries them;
- the school is working to overcome any “code of silence” that may exist in the current student culture;
- the school has adopted some form of a bully-prevention program (e.g. conflict mediation, character education, restorative justice); and
- a threat assessment team has been established at the school.

According to the 2007-08 Parent Snapshot and Student Climate Surveys . . .

- 94 percent of students say they feel safe at school.
- 95 percent of students say they have friends at school.
- 99 percent of parents say teachers treat their student with respect.
- 99 percent of parents say students of different cultural, racial and ethnic backgrounds are treated with respect at this school.

Demographics

Percentage of Staff and Students of Color



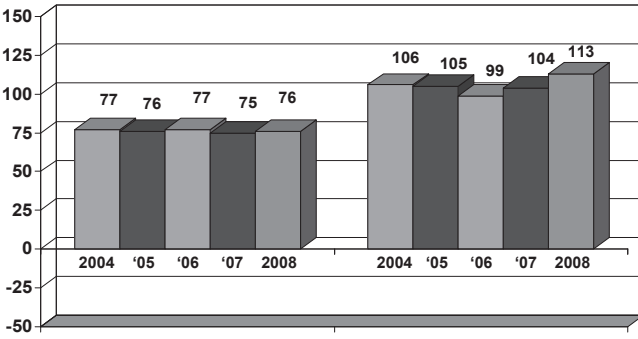
	2002	2003	2004	2005	2006	2007	2008
Staff - Persons of Color	5%	7%	5%	9%	9%	9%	10%
Students - Persons of Color	14%	13%	13%	14%	14%	16%	18%

Gender				Ethnicity									
Female		Male		American Indian		African American		Caucasian		Asian		Latino	
#	%	#	%	#	%	#	%	#	%	#	%	#	%
158	43.8%	203	56.2%	4	1.1%	4	1.1%	297	82.3%	45	12.5%	11	3.0%

Special Programs											
ELL (English Language Learners)		Lunch				SPED (Special Education Students)		504 (non-SPED Disabled Students)		TAG (Talented and Gifted Students)	
		Free		Reduced							
#	%	#	%	#	%	#	%	#	%	#	%
7	1.9%	7	1.9%	5	1.4%	15	4.2%	0	.0%	39	10.8%

State Assessments of Achievement

CSAP Reading Weighted Index Results for All Grades



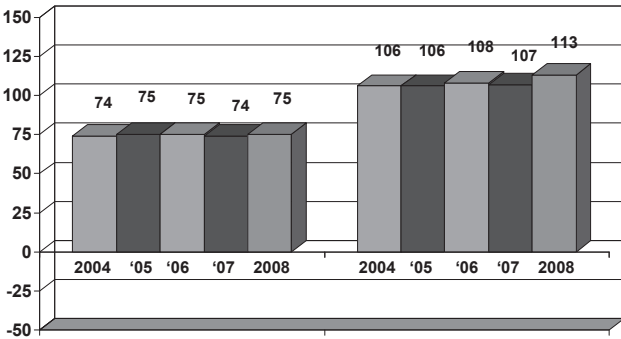
Standard Error for School

- 03-04 +/- 3
- 04-05 +/- 4
- 05-06 +/- 3
- 06-07 +/- 4
- 07-08 +/- 4

Colorado

Bear Creek

CSAP Writing Weighted Index Results for All Grades



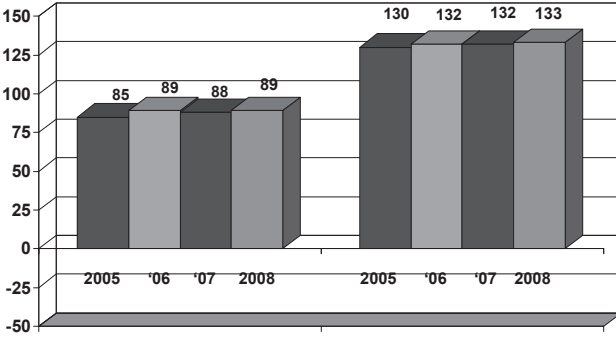
Standard Error for School

- 03-04 +/- 3
- 04-05 +/- 3
- 05-06 +/- 3
- 06-07 +/- 3
- 07-08 +/- 3

Colorado

Bear Creek

CSAP Math Weighted Index Results for All Grades



Standard Error for School

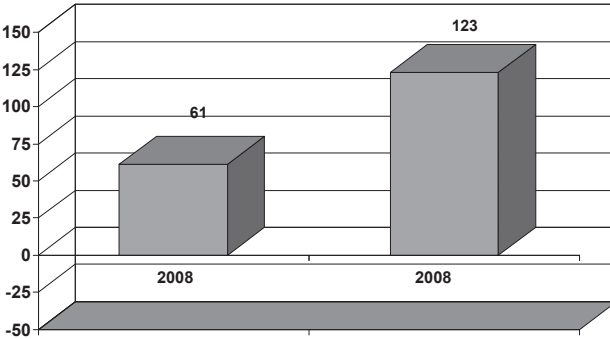
- 04-05 +/- 5
- 05-06 +/- 4
- 06-07 +/- 5
- 07-08 +/- 4

Colorado

Bear Creek

Beginning in spring 2005, CSAP math tests were administered to 3rd and 4th graders as well as 5th graders, who were the only elementary grade taking it in prior years. Therefore, only four years of data are available for all three grades.

CSAP Science Weighted Index Results for All Grades



Standard Error for School

- 07-08 +/- 7

Colorado

Bear Creek

In Spring 2008, a new science CSAP test was administered to students, therefore only one year of data is now available. Only 5th grade students took this assessment.

District Assessments

The district is required to assess and report student achievement of standards in social studies, art, music, physical education and world languages as these are not assessed by CSAP. Boulder Valley determines student achievement in these areas by having teachers administer district-developed common assessments and use the results of these assessments to inform their professional judgment regarding individual student performance relative to identified content standards. Other student work may also be included in the evidence that teachers use to make their determinations.

Results for the elementary level music, art and physical education standards are reported below. Assessment in other areas is being phased in over the next few years. Results for district assessed standards are reported as the percent of students who are proficient and above.

Music		
		2007-08
School	play	86 %
	read/write	93 %
	sing	95 %
BVSD	play	92 %
	read/write	92 %
	sing	85 %

Visual Arts	
<i>Elements/Design/ Sensory and Expressive Features</i>	
2007-08	
School	98 %
BVSD	99 %

Physical Education		
		2007-08
School	cognitive	89 %
	fitness	89 %
	skill	98 %
BVSD	cognitive	80 %
	fitness	84 %
	skill	89 %

Achievement Data

CSAP data is presented in the form of weighted index. To calculate the weighted index, each performance level is given an assigned value and then the values are averaged. An advanced proficient score is worth 150, proficient is 100, partially proficient is 50 and unsatisfactory and not tested receive -50. If all students were to achieve a score of proficient, a school's weighted index score would be 100. The weighted index calculation works in much the same way as a grade point average (GPA). Point values are given for each grade (or level of proficiency) and the average falls between the values associated with those categories.

Please note, weighted index calculations must be viewed in light of standard error. Standard error gives a rough idea of how much we might expect the average score for all students to vary due to chance, based on the number of students who were assessed.